

Plex, Tautulli, and *Arr's

Information related to Plex Media Server, Tautulli, and the *arr suite of programs

- [Overseerr](#)
- [Plex](#)
 - [Configure Plex with the Porn DB Media Scanner Agent](#)
 - [Library](#)
 - [Move Media Content to a New Location](#)
 - [Move the Plex Data Directory in Windows](#)
 - [Restore a Database Backup](#)
 - [Scheduled Server Maintenance](#)
 - [Scheduled Tasks](#)
 - [Where is the Plex Media Server data directory located?](#)
 - [Use IMDB title to search for film](#)
- [qBittorrent](#)
 - [How to Disable the qBittorrent Custom Theme via Command Line](#)
- [Radarr](#)
 - [Add Mailgun to Radarr](#)
- [Sonarr](#)
 - [Add Mailgun to Sonarr](#)
- [Tautulli](#)
 - [Add Webhook to Discord](#)

Overseerr

Plex

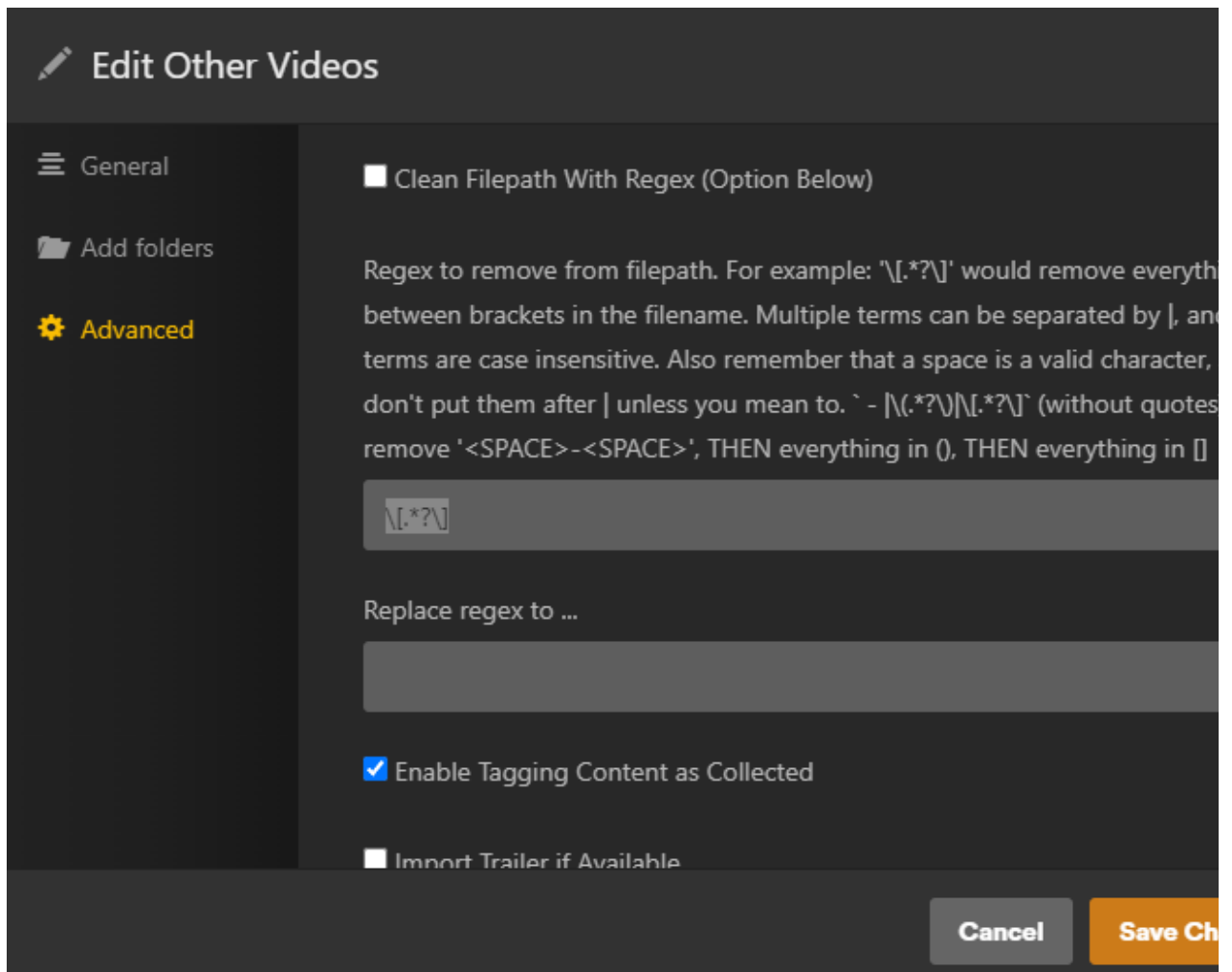
Configure Plex with the Porn DB Media Scanner Agent

1. Download unzip and rename the plug in
 1. <https://github.com/ThePornDatabase/ThePornDB.bundle/archive/refs/heads/main.zip>
 2. download the bundle.
 3. If the bundle is a zip file, unzip it
2. edit the file name to remove any extra text after .bundle
 1. The file extension should be .bundle
3. Copy the plug-in bundle in the Plug-ins folder at

```
%LOCALAPPDATA%\Plex Media Server\Plug-ins
```

4. Restart the Plex Media Server
5. Log into [The Porn DB API](#) interface and get an API token
6. Edit the Plex library with the adult video files
 1. Under the advanced tab select "ThePornDB Scenes" or "ThePornDB Movies" agent
 2. Fill in the Personal API Key filed with the token obtained in step 5
 3. Make sure all check boxes are cleared, except for use a Custom Title Format
 1. Change the Title Format to whatever you want using the correct params
 4. Under the Regex to remove from filepath use " \[.*?\] "

1.



5. Save changes and exit

7. Rename the video files using the proper format

1. For a successful match to your Scenes, filenames should be in the format Site YYYY-MM-DD Title (The date is the most important part) For matching movies, try to limit filename as much as possible to the actual name of the movie. Remove any 'release tags' as much as possible

2. Using [Whisparr](#) to change the file names would be the easiest

8. Remove video files from the library, and wait a few minutes

9. Add the video files back to the library. This should cause all of the files to match properly assuming the name is correct.

Plex

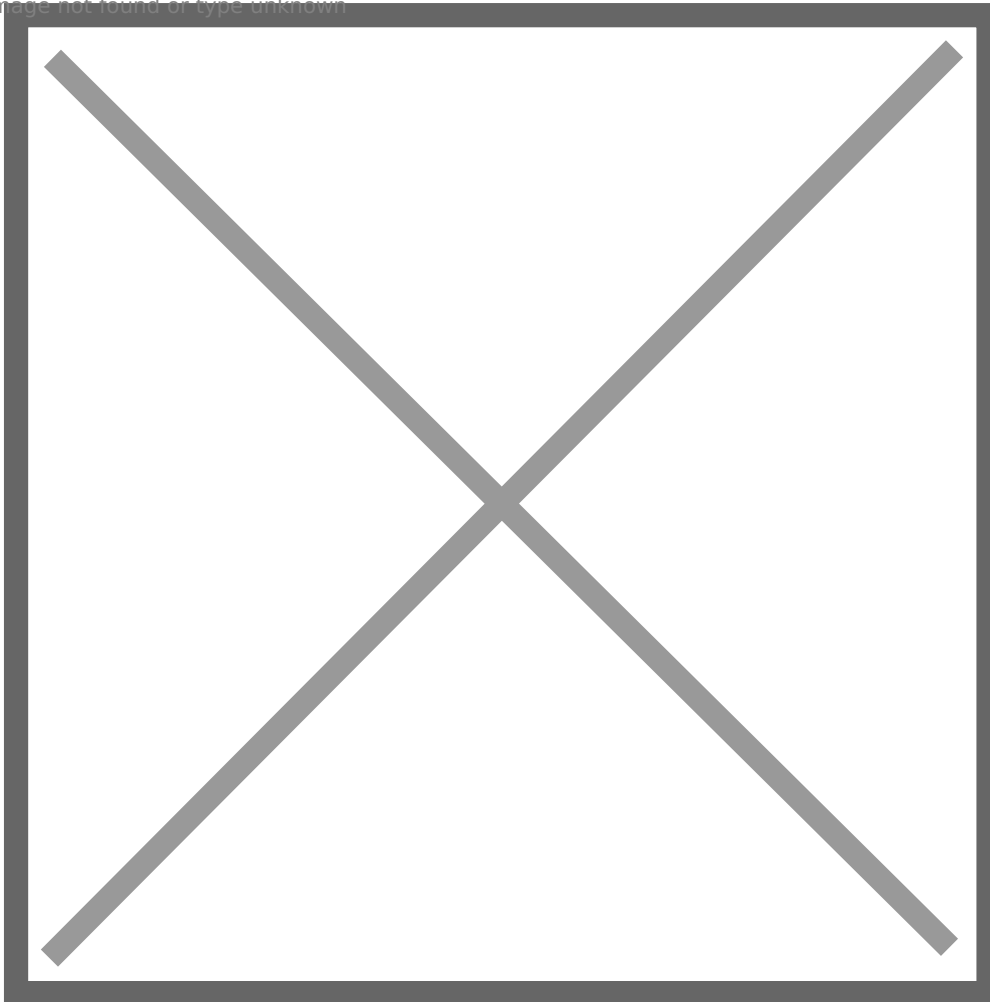
Library

<https://support.plex.tv/articles/200289526-library/>

Settings related to your libraries on your Plex Media Server. You can access these under *Settings > Server > Library* in Plex Web App.

Normal Settings

Image not found or type unknown



Scan my library automatically

When a change is detected in the source location for a library's content, the appropriate library will be scanned.

Note: This function relies on the computer's operating system providing the "something changed" trigger. Some operating systems don't provide this trigger and content mounted via a network will also typically not work. If your library doesn't automatically scan, you may have to set a periodical scan or do it manually.

Related Page: [Scanning vs Refreshing a Library](#)

Scan my library periodically

Turning this on will cause your Plex Media Server to run scans on your libraries using the designated interval.

Library scan interval

Choose to scan all of your libraries on a time-based interval. Choose the interval to use from the dropdown. Available frequencies:

- every 15 minutes
- every 30 minutes
- hourly
- every 2 hours
- every 6 hours
- every 12 hours
- daily

The scan interval is based on when the Plex Media Server is started. For instance, if you have it set to "every 6 hours" and you start your server at 12:35pm, then a scan will be started around 6:35pm.

Empty trash automatically after every scan

Choose to empty the library Trash after every update. With this option enabled, when an item's file is deleted from the drive, it will be removed from the Plex library on the next scan. Disabling this option keeps the item in the library with an indicator superimposed over the item's poster when the item is removed.

Related Page: [Emptying Library Trash](#)

Generate video preview thumbnails

This option creates a series of preview thumbnails from a media item when it is analyzed. Creating these images can take a considerable amount of time, CPU resources, and increase the storage space used. The images are stored in your Plex database so be careful you don't fill the drive!

These images are used by some Plex apps when you move back and forward in an app with the timeline scrubber. They'll also be displayed in Now Playing when someone is streaming from you so that you can see where they are in the video.

- **never:** Never generate thumbnails.
- **as a scheduled task:** Generate thumbnails during the regular server maintenance period.
- **as a scheduled task and when media is added:** Generate thumbnails for new items when they're added and for existing items during the regular server maintenance period.

Warning!: Be careful about enabling this feature prior to adding a large amount of content to your library. Doing so may mean that your server will be generating index files for hours or even days.

Related Page: [Video Preview Thumbnails](#)

Generate intro video markers (Plex Pass)

You can choose to have TV episodes analyzed to try and detect when the "intro" occurs during playback. When detected, apps will then offer a *Skip Intro* button, allowing you to quickly jump over the intro. This feature requires an active Plex Pass subscription.

- **never** - Never detect episode intros.
- **as a scheduled task** - Detect episode intros during the regular server maintenance period.
- **as a scheduled task and when media is added** - Detect episode intros for new items when they're added and for existing items during the regular server maintenance period. This is the default behavior.

Related Page: [Skip TV Show Intros](#)

Generate credits video markers (Plex Pass)

You can choose to have TV episodes and movies analyzed to try and detect when “credits” occur at the end. When detected, apps will then offer a *Skip Credits* button, allowing you to quickly jump over the credits. This feature requires an active Plex Pass subscription.

- **never:** Never analyze the media to find credits.
- **as a scheduled task:** Perform the analysis during the regular server maintenance period.
- **as a scheduled task and when media is added:** Perform the analysis for new items when they’re added and for existing items during the regular server maintenance period. This is the default behavior.

Related Page: [Credits Detection](#)

Generate chapter thumbnails

Chapter thumbnails provide images in the chapter view on supported apps. They can take a little time to generate and consume very minor additional disk space.

- **never:** Never generate chapter thumbnails.
- **as a scheduled task:** Generate chapter thumbnails during the regular server maintenance period.
- **as a scheduled task and when media is added:** Generate chapter thumbnails for new items when they’re added and for existing items during the regular server maintenance period.

We recommend using the default value.

Analyze audio tracks for loudness

Letting the server to analyze your audio (e.g. music) files for loudness information will allow you to make use of features such as leveling (often referred to as “normalizing”) the loudness as well as letting apps perform smart transitions between tracks. Analysis can cause high CPU usage, but doesn’t take very long to complete for individual tracks or albums. If you’re adding a lot of music (or creating a music library for the first time), the process could take a long time to complete.

- **never:** Never perform loudness analysis.
- **as a scheduled task:** Perform loudness analysis during the regular server maintenance period.
- **as a scheduled task and when media is added:** Perform loudness analysis for new items when they’re added and for existing items during the regular server maintenance period.

Analyze audio tracks for sonic features (Plex Pass)

Letting the server to analyze your audio tracks for sonic characteristics will allow you to make use of features such “Sonically Similar Albums”, “Track Radio”, and “Mixes For You”. This feature requires an active Plex Pass subscription.

Analysis requires significant CPU usage and can take a long time to finish (hours or multiple days for an existing music library, though usually just minutes for a single new album). If you’re adding a lot of music, or creating a music library for the first time, the process could take a long time to complete (hours or even multiple days).

- **never:** Never perform sonic analysis.
- **as a scheduled task:** Perform sonic analysis during the regular server maintenance period.
- **as a scheduled task and when media is added:** Perform sonic analysis for new items when they’re added and for existing items during the regular server maintenance period.

Related Page: [Sonic Analysis for Music](#)

Location visibility

You can set who is allowed to see location names for items which contain geolocation metadata. For instance, photos taken by a mobile phone will often have GPS data embedded, which we make use of to determine where the photo was taken.

By default, only the server admin/owner account will be able to see the location information. You can optionally allow shared users to see the information, too.

OS X Specific Settings

Display notifications

Display system notifications when scanning libraries.

Advanced Settings

Click on the *Show Advanced* button at the top right of the settings area to toggle display of advanced settings. Be careful when adjusting or using advanced settings.

Run a partial scan when changes are detected

When changes to library folders are detected, only scan the folder which changed rather than the entire content location. This works together with the normal *Update my library automatically* setting (and requires that setting to be enabled).

Allow media deletion

Plex apps (signed in with the same Plex account as the Plex Media Server) will be able to delete media from the library. If you've granted other Plex accounts access to your server, they will not be authorized to delete media, even with this setting enabled.

Deleted items will be immediately removed from your library *and the corresponding media file will also be deleted*. Most operating systems will place the file in the system Trash or Recycle Bin, but it's possible the file will be permanently deleted immediately (particularly when deleting large numbers of items).

Warning!: Be careful enabling this setting as it allows actual source media files to be deleted from your system.

Note: Other users granted access to the Plex Media Server cannot delete media through an app, even with this option enabled. Only the server owner account can delete media.

Related Page: [How do I delete something from my Library?](#)

Weeks to consider for Continue Watching

Lets you choose how many weeks to check for content to be included in the Continue Watching data for a library. The default value of 16 weeks is good for the vast majority of users. You can lower the value if your Continue Watching is particularly slow to appear. (Increasing the value can cause Continue Watching or app dashboards to be much slower to appear.)

Maximum number of Continue Watching items which will appear

Choose the maximum number of shows that can appear in Continue Watching. Setting a very high number can negatively affect performance.

Include season premieres in Continue Watching

Season premieres generally will fall outside of the number of weeks for Continue Watching for most people, since it can be several months before a new season starts. Enabled by default, this setting makes episode one of a new season appear even if it falls outside of *Weeks to consider for Continue Watching* setting (assuming all previous episodes are watched).

Video played threshold

Set the progress percentage for video playback at which point the video will be marked as played. (Default threshold is 90%.)

Video play completion behavior

Decide whether to use end credits markers to determine the “played” state of video items. When markers are not available the selected threshold percentage (from the above setting) will be used.

- **at selected threshold percentage:** Base the “played” detection solely off of the completion percentage of playback.
- **at final credits marker:** Mark the item played when hitting the last credits (which would be *after* any potential mid- or post-credits scenes).
- **at first credits marker:** Mark the item played when hitting the first credits (which would be *before* any potential mid- or post-credits scenes).
- **earliest between threshold percent and first credits marker:** Use the first credits marker only if it is earlier than the manually set percentage, otherwise use the manually set percentage. This is the default behavior.

Enable smart shuffling on artists and smart music playlists

This affects how shuffling works when shuffling a musical artist or smart (music) playlist. When enabled, playback will prefer highly rated, popular, and less recently heard tracks. When disabled, you’ll get true randomness (which, ironically, often feels *less* random to people).

Group albums by type (Plex Pass)

Group albums under a musical artist by the type of album (e.g. EP, Single, Compilation, Live, etc.), when the metadata is available. This feature requires an active Plex Pass subscription.

Enable iTunes plugin

Enable local iTunes library path

iTunes library XML path

You can enter the full path to the main XML file for your iTunes library. This is typically only necessary if the iTunes library is in a non-standard location. This is for importing iTunes Playlists

Note: From iTunes Version 12.2 and later the library XML file is not created by iTunes. You must enable it in iTunes advanced preferences. <https://support.apple.com/en-us/HT201610>

Run scanner tasks at a lower priority

On low-powered systems (e.g. ARM-based NAS devices), it can be beneficial to run scanner tasks at a lower priority than other tasks. This can help ensure they do not interfere with regular streaming.

Marker source

Credits markers can be generated locally and/or retrieved via an online database. Online markers may not always exist, if this preference is set to 'both' then any locally detected markers are submitted anonymously back to the online database for future use.

- **both, try online first:** Your server will first check online to see if any matching marker information already exists. If it exists, the online information will be used. Otherwise, your server will analyze the file locally (and will then contribute back online once finished). This is the default behavior.
- **online only (no local detection):** Your server will check online to see if any matching marker information already exists. If no matches are found, then no analysis will be performed locally.
- **local detection only:** If your server generates any marker information, it will not be contributed to the "cloud" data at all.

Database Cache Size (MB)

Set the size of the main database cache, in MB. The default value is and should be sufficient for just about every user. Increasing much beyond the default value is likely to only benefit users with *extremely* large media collections (as in, hundreds of thousands of episodes or music tracks).

Move Media Content to a New Location

<https://support.plex.tv/articles/201154537-move-media-content-to-a-new-location/>

As your media collection grows, you might upgrade to a larger hard drive, install a NAS, or otherwise simply have a need to move your content to a new location.

Note: We always recommend [Backing Up Plex Media Server Data](#) data before making major changes to your library.

Upgrading a Hard Drive

If you're simply upgrading to a new/larger hard drive, the easiest thing to do is to name the new location *exactly* the same as the original one. That means simply making sure the new hard drive is named exactly the same as the old one, and that the media files are in the same location.

The general procedure is outlined below. For this example, we'll assume that your content is currently on a hard drive named *MyMediaDrive*.

1. Quit/exit your Plex Media Server
2. Re-name the *old* hard drive to a different name (e.g. *OriginalMediaDrive*)
3. Name the *new* hard drive to the exact same name as the original drive (i.e. *MyMediaDrive*)
4. Copy the content from the old drive to the new drive, *making sure* that the content ends up in the same relative location
5. Start the Plex Media Server

If you've done things correctly, your server won't even know that anything has changed and your content will work right away.

Moving Content to a New Location

If you need to move content to a new location, you'll have to go through a few additional steps.

Preparation

Disable Emptying of Trash

On your Plex Media Server, you'll want to *disable* the *Empty trash automatically after every scan* preference for the server.

Related Page: [Library](#)

Stop the Plex Media Server

Quit or exit the Plex Media Server so that it is no longer running.

Copy Content to the New Location

Copy your media files to the desired location. You don't necessarily have to keep the same relative folder structure if you don't wish to do so.

Update your Plex Media Server Configuration

Start the Plex Media Server

Once your content is available on the new location, start your Plex Media Server.

Launch Plex Web App

Open your Plex Web App and you should see your libraries, though your content is unlikely to work yet.

Related Page: [Opening Plex Web App](#)

Edit Your Libraries

In order to update the content location for your media, you'll need to *Edit* a library and then add the appropriate folder for where your content is now located. Leave the existing/previous folder location in there for now.

You'll need to do this for each of your libraries, but you should probably complete the process for one at a time.

Related Page: [Editing Libraries](#)

Update the Library

After adding the new content folder, a scan of the library will probably start. If not, simply do a standard *Scan Library Files*.

The server will examine the contents of the new location and associate the content with the existing media items in your library.

Related Page: [Library Actions](#)

Remove Old Content Location

Once everything is completed and you've verified that things are working correctly and you can access your content, you can remove the old content location for your libraries. To do so, *Edit* the library and remove the old/previous folder location.

Once removed, you may need to empty your library trash in order to remove the entries where the content was stored at the old content location.

Move the Plex Data Directory in Windows

To change the Plex data directory in Windows, use the following steps:

1. Log onto your Plex server as the user account that is running the Plex Media Server instance.
2. Stop the Plex instance running on the server by right-clicking the Plex system tray icon and the select **Exit**. If [Plex is running as a service](#), you should just stop that service.
3. Click the Start button and type **services.msc** – the **Services app** should be displayed in the search results. Right-click the **Services app** and select the **Run as administrator** option.
4. In the **Services** list, scroll down until your see the **Plex Update Service** service. Right-click the service and select the **Stop** option from the context menu.
5. Open Windows Explorer and navigate the Plex data directory, which is here by default:

```
%LOCALAPPDATA%\Plex Media Server
```

6. Copy the contents of the Plex data directory to the new location, for example:

```
M:\Plex\Plex Media Server
```

The copy process can take several hours, depending on the size of your media library.

7. Once the copy has completed, click the Start button and type **regedit.exe** and the open the registry editor.
8. Navigate to the following key in the registry:

```
HKEY_CURRENT_USER\Software\Plex, Inc.\Plex Media Server
```

9. If the value **LocalAppDataPath** does not exist in the list on the right, right-click an empty area in the list and select **New->String Value**. Name the value **LocalAppDataPath**.
10. Double-click the LocalAppDataPath value and enter the path to the new Plex data directory. Do not include the Plex Media Server folder in the path. For my example above, the LocalAppDataPath data value will be:

```
M:\Plex
```

The Plex LocalAppDataPath Value in the Windows Registry.

The Plex LocalAppDataPath value in the Windows registry

11. Close the registry editor.

12. Restart the computer to have all the Plex services and processes restart and begin to use the new data directory location.

Notes about moving the data directory in Windows

While moving the Plex data directory can be done, there are a few points to consider before moving the directory:

- The file system where the data directory is located must be NTFS.
- The data directory cannot be located on a network share.
- Don't point the data directory to the root directory of a drive – specify a folder on the drive.
- For performance, you may want to ensure the data directory is on an SSD, and not a spinning hard disk.

The above sections outline how to move the Plex data directory in Windows to a new location. If the system drive in your server is low on drive space, moving the Plex data to another drive could help free up much needed space.

Restore a Database Backup

<https://support.plex.tv/articles/202485658-restore-a-database-backed-up-via-scheduled-tasks/>

One of the many Scheduled Tasks that a Plex Media Server performs is to make regular backups of the core databases, which hold things such as your viewstate information and media matching details.

Related Page: [Scheduled Server Maintenance](#)

Finding the Database Backups

The location of the database backups will vary by operating system. Unless you've altered the location via the *Backup directory* advanced setting, you'll find the backup files under the `Plug-in Support/Databases` subdirectory inside the normal [server data directory](#).

The database backups will have the date in the filename and will be named along the lines of:

```
com.plexapp.plugins.library.db-2020-05-31  
com.plexapp.plugins.library.db-2019-06-01
```

and

```
com.plexapp.plugins.library.blobs.db-2020-05-31  
com.plexapp.plugins.library.blobs.db-2019-06-01
```

Related Page: [Where is the Plex Media Server data directory located?](#)

Restoring a Backup

Once you've found the backup you wish to use:

1. Stop/quit your Plex Media Server

2. Move the following files out of the directory and store them somewhere for backup, just in case. (You don't want the "-shm" and "-wal" files to remain in the databases directory when restoring the corresponding database.)

```
com.plexapp.plugins.library.db
com.plexapp.plugins.library.db-shm
com.plexapp.plugins.library.db-wal
```

and

```
com.plexapp.plugins.library.blobs.db
com.plexapp.plugins.library.blobs.db-shm
com.plexapp.plugins.library.blobs.db-wal
```

3. Duplicate the database backup file into the correct directory and then rename them to `com.plexapp.plugins.library.db` and `com.plexapp.plugins.library.blobs.db`.
4. Ensure that Plex Media Server has read/write permissions to the restored database file(s) (e.g. in a Linux install, the `plex:plex` (user:group) needs access)
5. Start your Plex Media Server

Scheduled Server Maintenance

<https://support.plex.tv/articles/202197488-scheduled-server-maintenance/>

Your Plex Media Server can be scheduled to perform certain maintenance tasks for you. Tasks that can be included in maintenance:

- Automatically back up your critical watched/unwatched/progress viewstates for your Libraries
- Optimize the database
- Clean up remnants of removed Library items
- Refresh local metadata to pick up subtitles, artwork, and more
- Perform a standard Library Update on your Libraries
- Keep your media analysis up to date
- Keep music libraries up to date with concert info and popular tracks

How to Enable Scheduled Tasks

Turning on your Scheduled Tasks is easy. In your Plex Web App, simply go to *Settings > Server > Scheduled Tasks*.

- Choose the start and end times for maintenance (these are based off the local time on your Plex Media Server)
- Choose the tasks you wish to enable
- Save the changes

Most people will want to schedule the maintenance to occur either while they sleep or perhaps while they're away from home at work. Typically, a 3-4 hour window for maintenance is more than sufficient.

Note: Due to the way scheduling is calculated, tasks which occur every three days or every week may not occur for the first time until a few days after scheduling is enabled.

Related Page: [Scheduled Tasks](#)

Available Tasks

Optional Settings

There are multiple tasks available that you can have performed during maintenance. We recommend leaving the default settings checked, aside from choosing the start and end time appropriate to you.

- Schedule the beginning and ending time
- Back up database every three days
- Optimize database every week
- Remove old bundles every week
- Remove old cache files every week
- Refresh local metadata every three days
- Update all libraries during maintenance
- Upgrade media analysis during maintenance
- Refresh (music) metadata periodically
- Perform extensive media analysis during maintenance
- Backup directory location (advanced)

For details on the available settings, see the documentation for the Plex Media Server settings.

Related Page: [Scheduled Tasks](#)

Other Tasks Performed During Maintenance

In addition to the settings you can enable or disable directly, there are some other tasks that might also get performed during the maintenance period.

Chapter Thumbnail Generation

Depending on your setting for the Generate chapter thumbnails setting, they may get created during the maintenance period as part of your scheduled tasks. You may notice increased CPU usage when the thumbnails are generated, particularly on lower-powered systems.

Related Page: [Library](#)

Video Preview Thumbnail Generation

If you have set your server to generate Video Preview Thumbnails, those may get created during the maintenance period. Creation of these thumbnails is an intensive process and may cause high CPU usage during the generation.

Plex

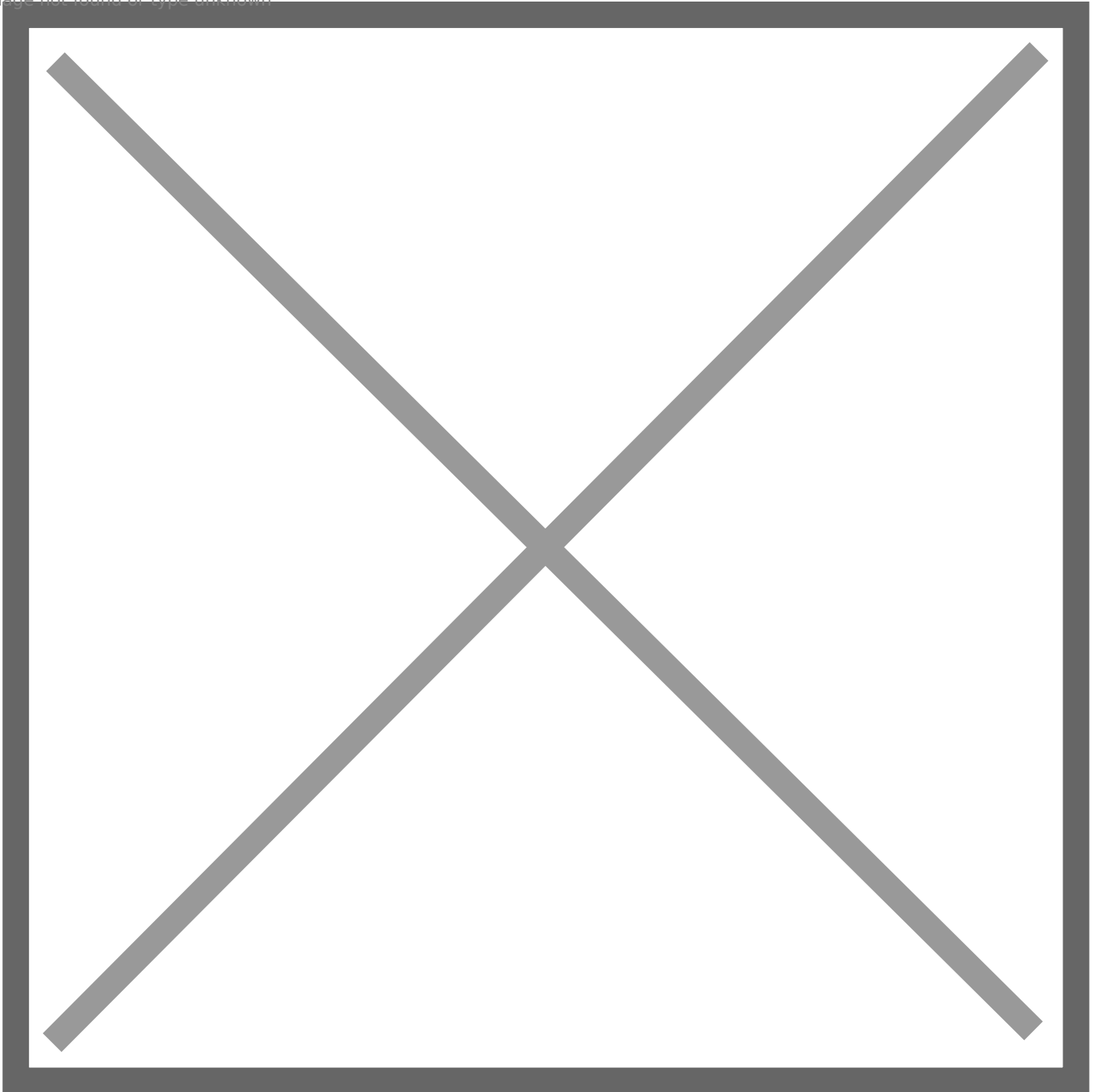
Scheduled Tasks

<https://support.plex.tv/articles/201553286-scheduled-tasks/>

Plex Media Server settings related maintenance performed via Scheduled Tasks. You can access these under *Settings > Server > Scheduled Tasks* in Plex Web App.

Normal Settings

Image not found or type unknown



Note: Due to the way scheduling is calculated, tasks which occur every three days or every week may not occur for the first time until a few days after scheduling is enabled.

Schedule Time

You can choose the (local to the server) hour at which the background maintenance tasks should start and end. This defaults to starting at 3am and ending at 6am.

Backup database every three days

Every three days, a backup of your core SQL database file will be created (if it is not already corrupted). This is the database that holds your media viewstate and other critical information. A backup can help protect against corruption which can occur in rare cases when a machine is powered down unexpectedly, for example.

Up to three backup copies will be kept in a rotating manner.

Warning!: This is only a backup of your core database; it is not a backup of all of your metadata content. This should *not* be considered a replacement for [having a backup](#) of your Plex Media Server data.

Related Page: [Restore a Database Backed Up via 'Scheduled Tasks'](#)

Optimize database every week

This task ensures the database is running as quickly as possible. Especially after lots of additions or deletions, the database can get slowed down.

Remove old bundles every week

Metadata information, artwork (posters, banners, art, etc.), and similar data are stored in “bundle” packages. When a media item is removed from the library, the bundles retained temporarily by default so that the item can be easily restored if desired. This task removes the bundle packages associated with items no longer in your library.

Remove old cache files every week

When the image processor inside the Plex Media Server processes images (e.g. to resize them), a cached version of the transformed file is kept around for quick access later. This task cleans up files which were created over a month ago.

Refresh local metadata every three days

If you add a new local subtitle or cover art file, the local media agent will pick this up and insert it into the library. This usually happens on-the-fly if the server has detected a change in the directory time. However, it adds a second or two when choosing an item in your library before it appears, so doing it at night ensures things are speedy during the day.

This setting does *not* download new metadata for your content.

Update all libraries during maintenance

(Disabled by default.) This will run a standard scan on your libraries during the maintenance period, to find new content. It will *not* force a refresh of metadata for existing content.

Related Page: [Scanning vs Refreshing a Library](#)

Upgrade media analysis during maintenance

We do extensive media analysis on every file to ensure correct playback across the huge range of devices and apps. Occasionally we fix a bug in media analysis, or update things to capture some additional data. Similar to local metadata, this is computed on the fly when needed, but it can add a delay when selecting an item. This task ensures analysis is always up to date.

Refresh metadata periodically

Over the course of the month, the server will refresh the metadata for musical artists and TV shows in your library. This will help ensure that your artists have good tour date information (if you've enabled that feature) and that Plex Pass users of music libraries will automatically get new lyrics from LyricFind (if that's enabled), for instance.

Note: This metadata refreshing currently only occurs for music and TV libraries (assuming the library is on the latest metadata agent).

Perform extensive media analysis during maintenance

This does an extensive bitrate analysis on each file in your library to help with bandwidth controls.

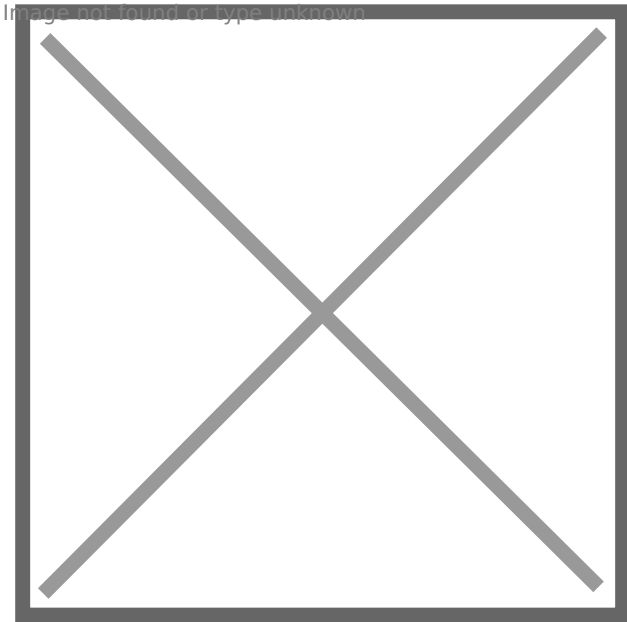
Related Page: [Server Settings - Bandwidth and Transcoding Limits](#)

Fetch missing location names for items in photo sections

If you've enabled the *Save location names* preference for a Photo library, this lets the server get the names for locations, based on the geo data embedded in the photos.

Advanced Settings

Click on the *Show Advanced* button at the top right of the settings area to toggle display of advanced settings. Be careful when adjusting or using advanced settings.



Backup directory

If you wish, you can alter the location where the backups of the SQL database file are stored. Enter the full path to the desired location. As noted above, this should *not* be considered a replacement for real backups.

Note: If you modify the backup location, you must first create the specified directory (Plex Media Server will not create the directory automatically).

Where is the Plex Media Server data directory located?

<https://support.plex.tv/articles/202915258-where-is-the-plex-media-server-data-directory-located/>

The main Plex Media Server data directory location will vary based on your operating system. Below are the default locations.

Related Page: [Backing Up Plex Media Server Data](#)

Windows

On Windows, the content is located inside of the user directory.

```
%LOCALAPPDATA%\Plex Media Server
```

macOS

Using the Finder's "Go" menu, select *Go To Folder...* then enter the following in the dialog box that pops up:

```
~/Library/Application Support/Plex Media Server/
```

Linux and Other Devices

General

In general, the location for the various Linux versions of Plex Media Server will be found under:

```
$PLEX_HOME/Library/Application Support/Plex Media Server/
```

ASUSTOR

```
/volume1/Plex/Library
```

Debian, Fedora, CentOS, Ubuntu

```
/var/lib/plexmediaserver/Library/Application Support/Plex Media Server/
```

Docker

The location for the data directory for Plex Media Server when running Docker will depend on what you specified when setting up the Docker container. See our normal Docker container documentation on GitHub.

Related Page: [GitHub: Plex Media Server on Docker](#)

FreeBSD

```
/usr/local/plexdata/Plex Media Server/
```

FreeNAS

FreeNAS 11.3 or newer

```
${JAIL_ROOT}/Plex Media Server/
```

FreeNAS 11.2 or earlier

```
/${JAIL_ROOT}/var/db/plexdata/Plex Media Server/
```

NVIDIA SHIELD

In a default installation, you will not be able to access the Plex Media Server data directory when running on NVIDIA SHIELD. In order for you to have access, you need to choose to [move the storage location](#) for the server. Specifically, when moving the data, you must choose either `Internal Storage (user accessible storage location)` or a removable drive that you've connected to the SHIELD.

Use a standard method to connect to the NVIDIA SHIELD to access the storage, such as that outlined in our "[Accessing SHIELD Storage](#)" article. The path to the server data will vary, depending on whether you chose to move to the user-accessible internal storage or to a removable drive that you connected to the device.

- "Internal Storage" path:

```
/Internal/Android/data/com.plexapp.mediaserver.smb/Plex Media Server/
```

- "Removable" storage path (where `[removable drive name]` is the name of the removable drive, such as "`Media`"):

```
/[removable drive name]/Android/data/com.plexapp.mediaserver.smb/Plex Media Server/
```

Related Page: [Moving server data storage location on NVIDIA SHIELD](#)

Related Page: [Accessing SHIELD Storage](#)

QNAP

The exact data directory location can vary from system to system. To access it, connect to the Console of QNAP via SSH and then enter:

```
getcfg -f /etc/config/qpkg.conf PlexMediaServer Install_path
```

From the result given to you, then add `/Library/Plex Media Server` to the end of it. You might end up with a path like the following (*this is just an example!*):

```
/share/CACHEDEV1_DATA/.qpkg/PlexMediaServer/Library/Plex Media Server
```

Related Page: [Forums: QNAP FAQ](#)

ReadyNAS

```
/apps/plexmediaserver/MediaLibrary/Plex Media Server/
```

Seagate

The exact install location can vary from system to system. To access it, first enter the appropriate rainbow container, from the command line:

```
sudo rainbow --enter com.plex.plexmediaserver
```

Once in, you can go to the data directory:

```
/data/plex_conf/Library/Application Support/Plex Media Server
```

Snap

```
/var/snap/plexmediaserver/common/Library/Application Support
```

Synology

DSM 7

```
/volume1/PlexMediaServer/AppData/Plex Media Server
```

DSM 6

```
/volume1/Plex/Library/Application Support/Plex Media Server/
```

TerraMaster

```
/home/plex/Library/Application Support/Plex Media Server
```

Thecus

/raid/data/module/Plex/sys/Plex Media Server/

Western Digital

/mnt/HD/HD_a2/plex_conf/Plex Media Server/

Western Digital My Passport Wireless Pro:

/shares/Storage/.wdcache/.plexmediaserver/Application Support/Plex Media Server/

Plex

Use IMDB title to search for film

<https://support.plex.tv/articles/201018497-fix-match-match/>

Search for your film using IMDB.com

once found use the ttXXXXXXXXXXXX number to identify

user "imdb-ttXXXXX" as the search term

qBittorrent

Information about the qBittorrent torrent application

How to Disable the qBittorrent Custom Theme via Command Line

I, like those of you who are not monsters, prefer a dark theme for qBit. This is easily achieved by enabling the custom qBit theme for the webui in the settings, and pointing to the correct file path. But what happens when you screw it up? Well you get locked out of your qBit webui, with no way to turn it off unless you have access to the actual application GUI. Not all installations have this.

That brings us to the command line. It is a pretty simple fix actually. All you need to do is find a file called "qBittorrent.conf" This will be in different locations depending on how your qBit is installed, ie. Docker container, as a program, etc.

If you are unfamiliar with navigating the command line, that information is readily available on google, and learning how to do it on a youtube video will probably be easier for you. Anyway, find the file, and access it with a text editor. If you have it installed as a program this will be easy enough for you. On a docker container or such, you'll need to use a text editor like Nano, or Vim.

You are looking for a grouping of settings titled "`WebUI\AlternativeWebUIEnabled=true`" and "`WebUI\RootFolder=`"

The first settings enables the Alternative webui, set that to `false`. Do NOT set it to `False`, make sure it is all lowercase. The second is the file path for your .qbtheme file, delete that entirely, or change it to the correct path.

Restart qBittorrent, and when it comes back up you will be back on the normal webui and able to access it again.

My qBit is on docker and the file is located in `/config/qBittorrent/qBittorrent.conf`.

Radarr

Radarr

Add Mailgun to Radarr

Go to settings page, and then Connections.

Select new connection and then Mailgun

Go to www.mailgun.com log into your account and grab the API key

Configure notification triggers and then paste API key

configure a from address, sender domain, and recipient

Name

Mailgun

Notification Triggers

Select which events should trigger this notification [↗](#)

- On Grab
- On File Import
- On File Upgrade
- On Rename
- On Movie Added
- On Movie Delete
- On Movie File Delete
- On Movie File Delete For Upgrade
- On Health Issue
- On Health Restored
- On Application Update
- On Manual Interaction Required

Tags

Only send notifications for movies with at least one matching tag

API Key

The API key generated from MailGun

Use EU Endpoint

Enable to use the EU MailGun endpoint

From Address

Sender Domain

Recipient Address(es)

Delete



Test

Cancel

Save

Sonarr

Sonarr

Add Mailgun to Sonarr

Go to settings page, and then Connections.

Select new connection and then Mailgun

Go to www.mailgun.com log into your account and grab the API key

Configure notification triggers and then paste API key

configure a from address, sender domain, and recipient

Name

Notification Triggers Select which events should trigger this notification [🔗](#)

- On Grab
- On Import
- On Upgrade
- On Rename
- On Series Delete
- On Episode File Delete
- On Episode File Delete For Upgrade
- On Health Issue
- On Application Update

Tags

Only send notifications for series with at least one matching tag

API Key

The API key generated from MailGun

Use EU Endpoint? You can choose to use the EU MailGun endpoint with this

From Address

Sender Domain

Recipient Address(es)

Delete

Test

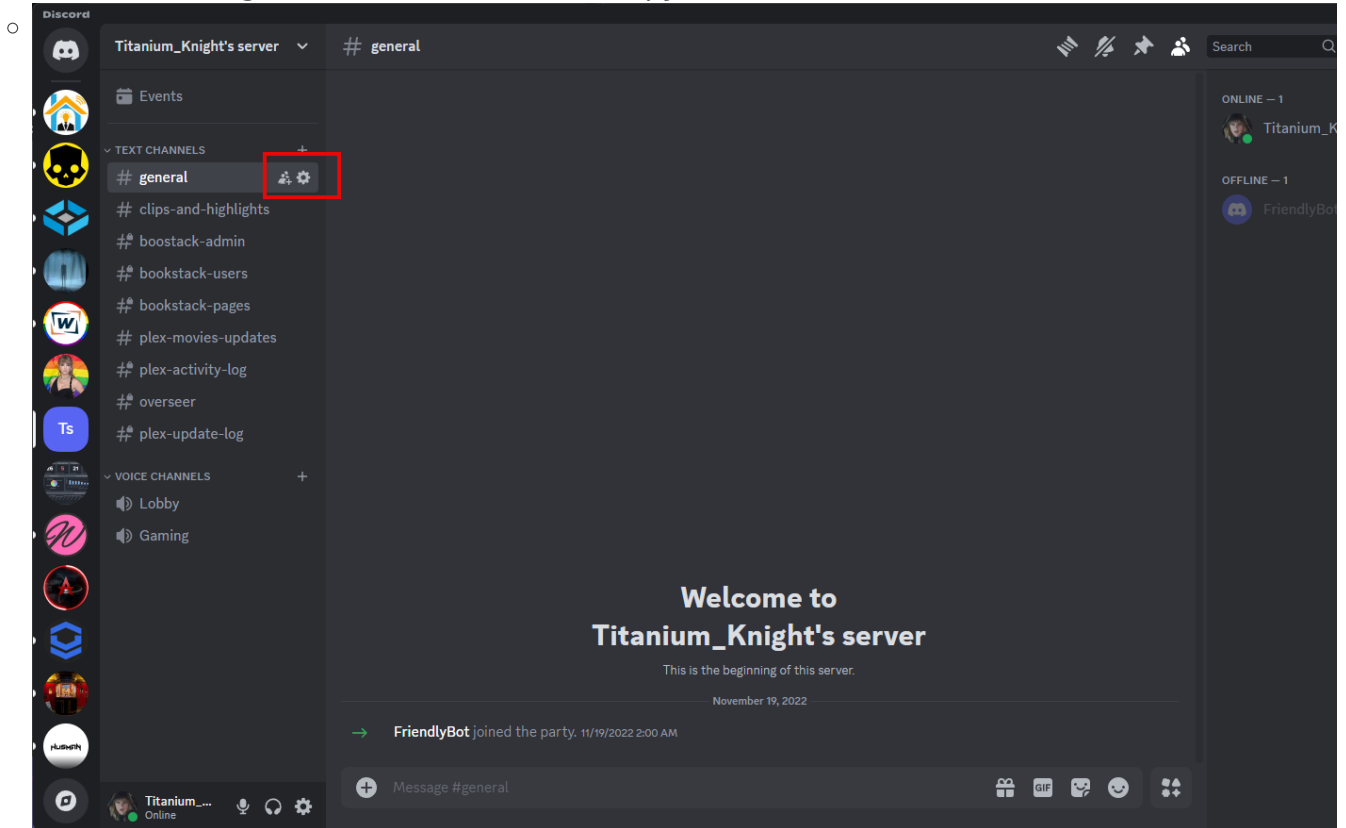
Cancel

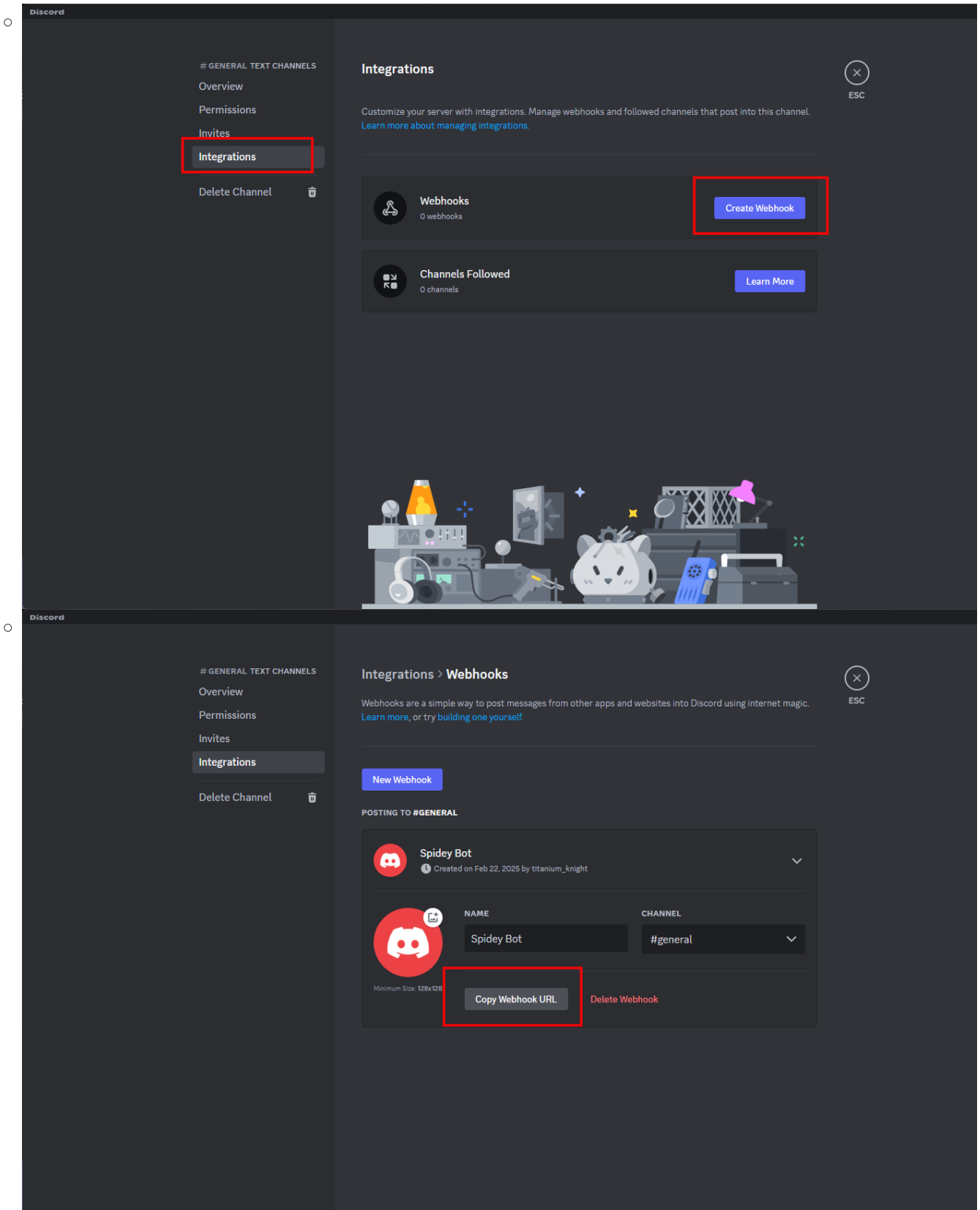
Save

Tautulli

Add Webhook to Discord

- Create a new Discord channel where you want the notification to be sent
- Next select settings and then webhook and copy the webhook URL





- In Tautulli go to notification settings

Settings

Help & Info

General

Homepage

Web Interface

Plex Media Server

Notifications & Newsletters

Notification Agents

Newsletter Agents

3rd Party APIs

Import & Backups

Tautulli Remote App

NOTIFICATION AGENTS

Add a new notification agent, or configure an existing notification agent by clicking on the item below. Please see the [Notification Agents Guide](#) for instructions on setting up each notification agent.

- Discord (2) 6 minutes ago ✓
- Discord (3) a few seconds ago ✓
- Email (1) 2 minutes ago ✕

+ Add a new notification agent

Edit Page Draft | BookStack

er Technician coltscomputer - AWS ... Electricity Calculator DNS Lookup Emulators Store - VMUG Portal PairDrop | Online

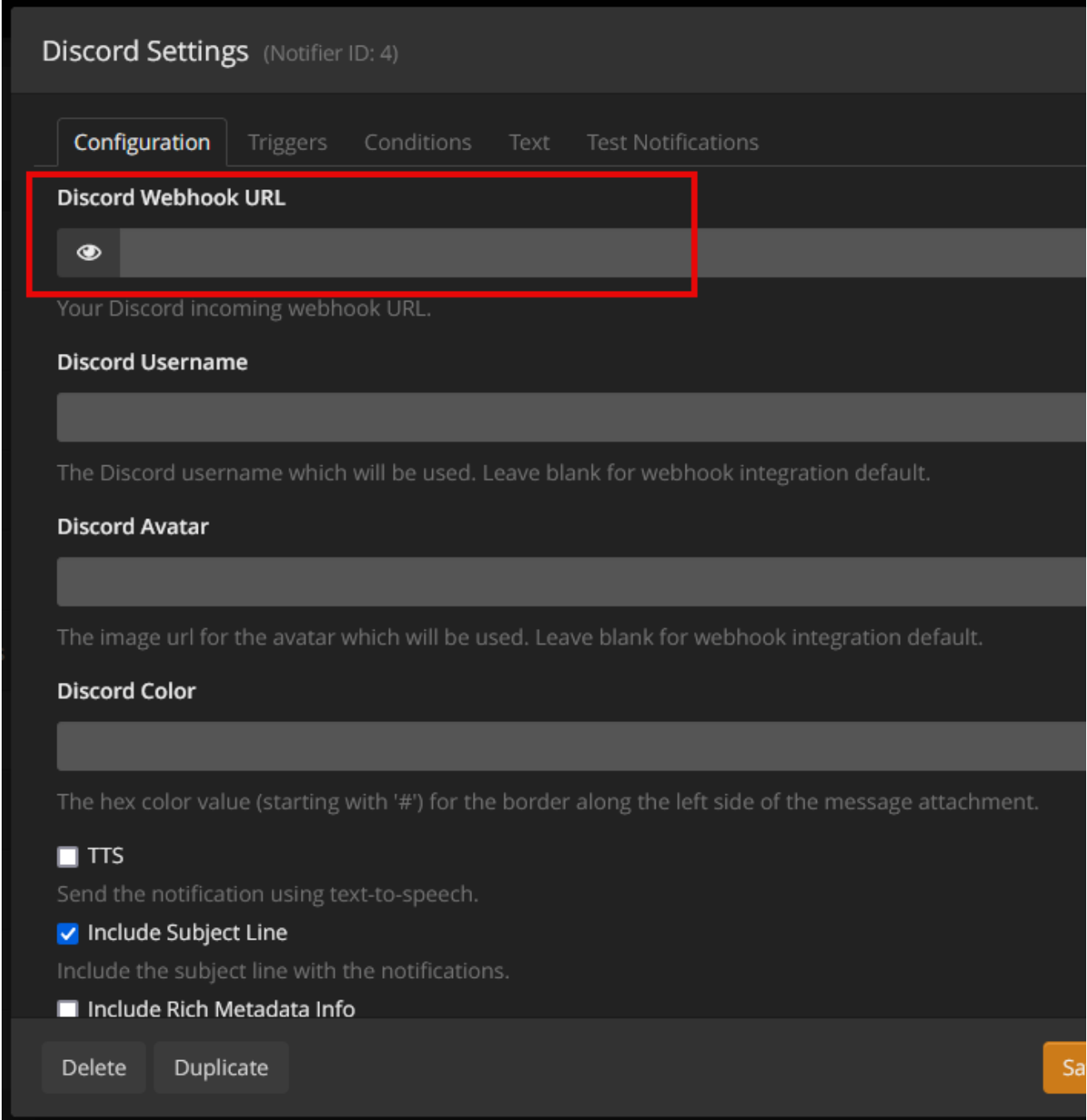
Add a Notification Agent

- Boxcar
- Browser
- Discord**
- Email
- Facebook
- Gotify
- GroupMe
- Growl
- IFTTT
- Join
- Kodi
- LunaSea
- Microsoft Teams
- MQTT
- ntfy
- Plex Android / iOS App

Cancel

- Paste the webhook URL here

◦



The image shows a dark-themed user interface for configuring a Discord webhook. At the top, it says "Discord Settings (Notifier ID: 4)". Below this are five tabs: "Configuration", "Triggers", "Conditions", "Text", and "Test Notifications". The "Configuration" tab is selected and highlighted with a red border. Under this tab, there are several sections:

- Discord Webhook URL:** A text input field with a red border and a toggle icon (an eye) to its left. Below it is the text "Your Discord incoming webhook URL."
- Discord Username:** A text input field. Below it is the text "The Discord username which will be used. Leave blank for webhook integration default."
- Discord Avatar:** A text input field. Below it is the text "The image url for the avatar which will be used. Leave blank for webhook integration default."
- Discord Color:** A text input field. Below it is the text "The hex color value (starting with '#') for the border along the left side of the message attachment."
- TTS:** A checkbox that is unchecked, with the text "Send the notification using text-to-speech." below it.
- Include Subject Line:** A checkbox that is checked, with the text "Include the subject line with the notifications." below it.
- Include Rich Metadata Info:** A checkbox that is unchecked.

At the bottom of the configuration area, there are three buttons: "Delete", "Duplicate", and "Save" (partially visible on the right).

- Input a username for the notification to use
- Configure your triggers for sending notifications.
- Save the config, then send a test notification.